

ASYH30KMTB

Please visit our webstore for full product and technical documentation 

Unit Type	Remote Controller	Wall Mounted	IR Included
Nominal Cooling Capacity	(kW)	8.0	
Nominal Heating Capacity	(kW)	8.8	
Height	(mm)	340	
Width	(mm)	1150	
Depth	(mm)	280	
Weight	(kg)	18.5	
Airflow Rate - Cooling - High	(m ³ /h)	1330	
Airflow Rate - Heating - High	(m ³ /h)	1330	
Sound Pressure Level - Cooling - High	(dB(A))	50	
Sound Pressure Level - Cooling - Low	(dB(A))	33	
Sound Pressure Level - Heating - High	(dB(A))	49	
Sound Pressure Level - Heating - Low	(dB(A))	33	
Sound Power Level - Cooling - High	(dB(A))	65	
Sound Power Level - Heating - High	(dB(A))	65	
Moisture Removal	(l/h)	2.6	
Refrigerant Type (Global Warming Potential)		R32 (675)	
Liquid Pipe Size		3/8"	
Gas Pipe Size		5/8"	
Unit Power Supply		From Outdoor Unit	



Document Downloads

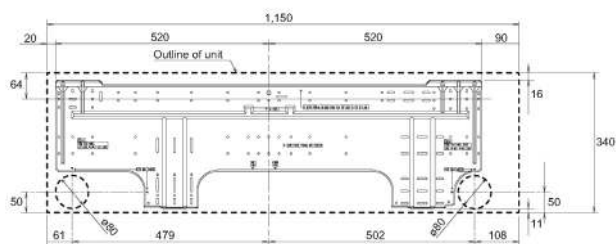
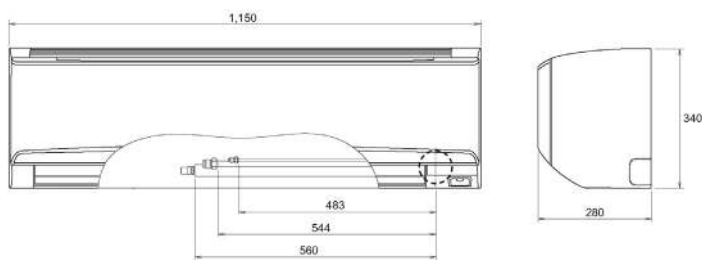
[Airflow - Fan Curve](#)
[Controls & Accessories](#)
[Dimensional Drawing](#)
[Function Settings](#)
[Inputs & Outputs](#)
[Installation Manual](#)
[Noise Curve](#)
[Operation Manual](#)
[Product Image](#)

[Spare Parts List All Pages](#)
[Specifications](#)
[Wiring Diagram](#)

Related Items

[AOYH30KMTB](#) 8.0kW Outdoor Unit - R32 Single Phase
[UTYTFSEF2](#) Wireless LAN interface
[UTYRNRZ5](#) Touch Screen Remote Controller
[UTYRCRYZ1](#) Compact Simple Remote controller
[UTYRHRV](#) Simple Remote Controller (without Master Control)
[UTYRSRY](#) Simple Remote Controller (with Master Control)
[UTYXWZXZ5](#) External Connect Kit
[UTYXCSXZ2](#) External Input / Output PCB
[UTYTWRXZ2](#) Communication Kit
[UTYTERX](#) External switch controller
[UTYVTGX](#) Splits Network Converter (DC Powered)
[UTYVTGXV](#) Splits Network Converter (AC Powered)

Unit: mm



•Specifications and design are subject to change without notice for further improvement.
 •Actual products' colors may be different from the colors shown in this printed material.