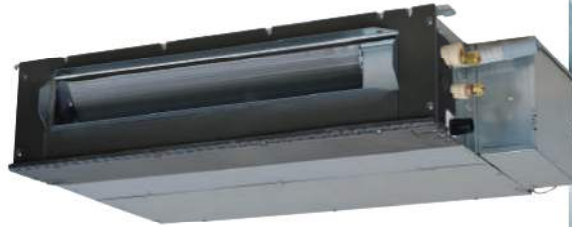




SINGLE-SPLIT CEILING CONCEALED TYPE

SRR-ZS

NEW



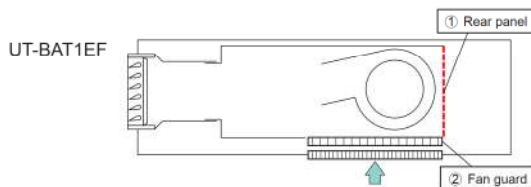
SRR25ZS-W, SRR35ZS-W



Thin design

The height of all SRR models is only 200mm.

Bottom air inlet kit (option)



FUNCTIONS

Energy saving

Clean operation & Filter



Comfort



Timer



Convenience



Others



SPECIFICATIONS

Indoor unit				SRR25ZS-W		SRR35ZS-W	
Outdoor unit				SRC25ZS-W1		SRC35ZS-W1	
Power source				1 Phase, 220 ~ 240V, 50Hz			
Nominal cooling capacity (Min~Max)			kW	2.5 (0.9 ~ 3.2)		3.5 (0.9 ~ 4.1)	
Nominal heating capacity (Min~Max)			kW	2.9 (0.9 ~ 4.4)		4.2 (1.0 ~ 5.2)	
Power consumption		Cooling/Heating	kW	0.62 / 0.65		0.93 / 1.01	
EER/COP		Cooling/Heating		4.03 / 4.46		3.76 / 4.16	
Max. running current			A	9		9	
Sound power level	Indoor	Cooling/Heating	dB(A)	56 / 59		57 / 60	
	Outdoor	Cooling/Heating		58 / 58		62 / 62	
Sound pressure level	Indoor	Cooling (Hi/Me/Lo/Ulo)		37 / 33 / 30 / 24		38 / 34 / 31 / 25	
		Heating (Hi/Me/Lo/Ulo)		40 / 37 / 34 / 28		42 / 38 / 35 / 29	
	Outdoor	Cooling/Heating		47 / 47		50 / 50	
Air flow	Indoor	Cooling (Hi/Me/Lo/Ulo)	m³/min	9.5 / 8.0 / 6.5 / 4.5		10.0 / 8.5 / 7.0 / 5.0	
		Heating (Hi/Me/Lo/Ulo)		10.0 / 9.0 / 8.0 / 6.0		10.5 / 9.5 / 8.5 / 6.5	
	Outdoor	Cooling/Heating		27.4 / 23.6		31.5 / 27.8	
Available external static pressure			Pa	35(Initial static pressure with air filter : 5Pa)			
Exterior dimensions	Indoor	HeightxWidthxDepth	mm	200 x 750 x 500			
	Outdoor			540 x 780(+62) x 290			
Net weight	Indoor / Outdoor		kg	20.5 / 31.0		20.5 / 34.5	
Refrigerant		Type/GWP	kg/TCO ₂ Eq	R32 / 675			
		Charge		0.62 / 0.419			
Refrigerant piping size		Liquid/Gas	ø mm	6.35(1/4") / 9.52(3/8")			
Refrigerant line (one way) length			m	Max. 20			
Vertical height differences		Outdoor is higher/lower	m	Max. 10 / Max.10			
Outdoor operating temperature range	Cooling		°C	-15~46			
	Heating			-15~24			
Bottom air inlet kit (option)				UT-BAT1EF			

* The data are measured under the following conditions(ISO-T1, H1). Cooling: Indoor temp. of 27°CDB, 19°CWB, and outdoor temp. of 35°CDB. Heating: Indoor temp. of 20°CDB, and outdoor temp. of 7°CDB, 6°CWB.

* Sound level indicates the value in an anechoic chamber. During operation these values are somewhat higher due to ambient conditions.

* 'tonne(s) of CO₂ equivalent' means a quantity of greenhouse gases- expressed as the product of the weight of the greenhouse gases in metric tonnes and of their global warming potential.